



ABINGDON MOTORSPORT

Present



The Abingdon Motorsport CAR-nival Stages

Sunday 10th June 2018

HISTORIC RALLY CAR REGISTER **old STAGER** HISTORIC STAGE RALLY CHAMPIONSHIP 2018

MINI SPORT **MINTEX CLASSIC**

SUBARU **Subaru WRC Spares Ltd** **prodrive** authorised supplier

Mr tyre motorsport

DAVE KEDWARD B.F. MOTOR BODYBUILDERS & ENGINEERS

HAMILTON Motorsport LTD

Jelf | Insurance Partnership

- All services with 24hr call
- Full service • Low Mileage
- Full service • Full service
- Full service • Full service
- Full service • Full service

22 years and still as popular as ever!

It all started as a bit of fun on a dis-used runway back in the 1990's with a silly idea of holding a rally and a sprint at the same venue over the same weekend and with each year the event seems to get bigger, better and more popular.

The 22nd Abingdon Motorsport CAR-nival Stages will feature 8 stages and around 70 miles of fast, smooth tarmac and one of the lowest cost per mile in the country.

In 2018, we are a qualifying round of several prestigious Rally Championships and you are therefore warned that despite there being 100 places, the event is **ALWAYS OVERSUBSCRIBED**, and delayed entry could mean disappointment. We are NOT reserving ANY and entries will be dealt with purely on **FIRST COME, FIRST SERVED BASIS**.

As a part of The Abingdon Motorsport CAR-nival Weekend (which has raised over £275,000 in 21 years), a large element of the event is always based around raising money for good causes. This year, in addition to The Friends of Stowford (Charity No 1089136), we will also be raising funds for the Abingdon Station Welfare Fund for those posted within Dalton Barracks.

Because of this, we structure the entry fee so that there is a transparent and minimum donation to the charity. To do this, we ask you to make a 'separate and mandatory contribution' as part of your entry fee. The total entry fee you pay is in-line with normal entry fees and it allows clarity by showing that if we start 100 entries who contribute £45 each then everyone knows that the minimum raised by the rally will be at least £4,500. It also allows you to contribute more if you so wish.

It should be noted however that as a 'donation' this will not be refunded, and it is a **MANDATORY** part of the entry package. In addition to these direct contributions, we also donate any surplus made towards the charities and this normally equates to around £15,00 to 20,000 each year.

The CAR-nival weekend features Sprinting, Rallying and an AutoSolo as well as Camping, a large Beer Tent, BBQ and Saturday evening cabaret (Comedians). Anyone wishing to stay for the weekend is welcome although you must appreciate that the facilities are 'as a farmer's field'. Camping and caravans are free of charge but must be parked as directed - Caravans **MUST NOT** be parked in the main area set-aside for tents.

Additionally, camping is not permitted in the Service Area due to local authority conditions of use. Anyone wishing to stay locally will find a list of local hotels on the website

We urge you to join us at The Abingdon Motorsport CAR-nival Stages, an event which has become a 'must do' on the motor sporting calendar.

PLEASE REMEMBER THAT SCRUTINEERING IS ONLY AVAILABLE ON SATURDAY 9th June BETWEEN 3PM - 7PM

www.abingdoncarnival.com

The Abingdon Team

The Abingdon Motorsport CAR-nival Stages

Sunday 10th June 2018

SUPPLEMENTARY REGULATIONS

ARTICLE 1 - Announcement

- 1.1 Farnborough District Motor Club will organise and promote The Abingdon Motorsport CAR-nival Stages, a National B Status Sealed-Surface Multi-Use Stage Rally at Dalton Barracks, Abingdon, on Sunday 10th June 2018, in association with Sutton & Cheam Motor Club and Craven Motor Club.

ARTICLE 2 - Jurisdiction

- 2.1 The event will be held under the General Regulations of The Motor Sports Association Ltd (incorporating the provisions of the International Sporting Code of the F.I.A.), these Supplementary Regulations and any written instructions that the organising clubs may issue for the event.

ARTICLE 3 - Authorisations

- 3.1 MSA National B Permit Number will be advised in the Final Instructions.
- 3.2 Championship Permit Numbers (where available) are as shown in Article 4.2.

ARTICLE 4 - Eligibility

- 4.1 The event is open to competitors (whether Entrant, Driver or Co-driver) holding a valid MSA competition licence appropriate for the event, who are fully elected members of clubs affiliated to either:
The Association of Central Southern Motor Clubs
The Association of South Western Motor Clubs
The Association of Eastern Motor Clubs
The Association of West Midlands Motor Clubs
The Cotswold Motor Sports Group
The Historic Rally Car Register
- 4.2 The event is a qualifying round of the following championships:
2018 HRCR Mintex 'Old Stager' Historic Stage Rally Championship 2018 incorporating the Mini Sport Mini Cup & Junior Mini Cup (Permit No. 53/2018)
2018 Hamilton Classic ACSMC Rally Tarmac Stage Rally Championship (Permit No.69/2018)
2018 Heart of England Rally Championship (Permit No. 11/2018)
In association with Mr Tyre Tyres & Steve Blackham Motorsport
2018 CMSG Rally Championship
In Association with B.P. Motor Bodybuilders & Engineers
2018 ASWMC Subaru WRC Spares Rally Championship (Permit No. 39/2018)
2018 Jelf Motorsport.com AEMC / ASEM Stage Rally Championship (Permit No 2/2018)
- 4.3 Competitors are reminded of the requirement to produce valid Competition Licences, Club Membership Cards, Entrants Licences and Championship Registration documents (if applicable) at Documentation.
- 4.4 Vehicles MUST possess a valid MOT certificate (if applicable) and an MSA Rally Car Log Book.
- 4.5 Vehicles will NOT be required to be taxed or insured for the public highway.

ARTICLE 5 - Timetable

5.1 The timetable for entries and the event is as follows:

Saturday 7 th April	-	Entries Open
Wednesday 30 th May	-	Entries Close
Friday 1 st June	-	Final Instructions Posted (latest date)
Saturday 9 th June	-	15.00 - 19.00 Noise, Scrutiny & Documentation
Sunday 10 th June	-	09.00 Rally starts 17.30 Rally finishes & Results / Awards.

ARTICLE 6 - Classes

6.1 The event will consist of 5 classes:

2 Wheel Drive Vehicles:

- Class A - Up to 1400cc
- Class B - 1401 cc to 1600cc
- Class C - 1601 cc to 2000cc
- Class D - Over 2000cc

4 Wheel Drive Vehicles:

- Class E - All capacities

- 6.2 Vehicles having engines with forced induction will be considered as having a capacity increase of 70% and should be entered in a class applicable to this multiplication factor.
- 6.3 The event is open to vehicles complying with Section R of the MSA 2018 Year Book.

ARTICLE 7 - Route & Course

- 7.1 The entire event will take place within the confines of Dalton Barracks & Airfield, near Abingdon, Oxfordshire including Noise Test, Scrutineering and Documentation. Ordnance Survey maps will not be needed, and any form of pre-event notes are prohibited.
- 7.2 The event will consist of up to 8 special stages covering up to 70 miles sealed surface roads.
- 7.3 The event WILL NOT include sections on Public Highway.
- 7.4 At Documentation competitors will receive a road book, additional instructions and time cards. The route will be defined by STAGE DIAGRAMS contained within the Road Book.
- 7.5 Advance arrows may be discarded where distances prohibit their safe use.
- 7.6 At chicanes or other hazards, chevron type marker boards will be used to indicate the correct entry point in accordance with R.29.1.
- 7.7 Samples of all stage markers and control boards will be available for inspection upon request at Documentation.
- 7.8 The event will utilise **TARGET TIMING** in accordance with R31. Upon completion of each stage, a Marshal under the supervision of the MSA Timekeeper will issue competitors with their 'Due Time' at the following Stage Arrival Control.
- 7.9 Competitors MAY be required to start stages at 30-second intervals.
- 7.10 Competitors will be provided with Time Cards at Documentation, which will be required to be surrendered at points indicated in the Road Book.
It is the responsibility of competing crews to ensure that cards are completed correctly, and the organisers reserve the right to use whatever means are at their disposal to establish times taken in the event of illegible or disputed times.
- 7.11 Special Stages will be timed to an accuracy of 1-second by Marshals under the supervision of an MSA Timekeeper.

ARTICLE 8 - Awards

- 8.1 Awards for the event will be presented as follows:
- | | |
|--------------------------------------|---|
| 1st Overall | <i>CAR-nival Stages Trophy + 2 Awards</i> |
| 2nd Overall | 2 Awards |
| 3rd Overall | 2 Awards |
| 1st in Class (Min. 4 starters) | 2 Awards |
| 2nd in Class (Min. 6 starters) | 2 Awards |
| 3rd in Class (Min. 8 starters) | 2 Awards |
| Best Craven MC / FDMC / Team Tempest | 2 Awards per club |
- 8.2 All awards are perpetual except the CAR-nival Stages Trophy, which must be returned after 10 months, or at the request of the organisers.
- 8.3 No competitor may win more than 1 award except for the Club Awards or any additional awards which may be notified in the Final Instructions.
- 8.4 The organisers reserve the right to amend the awards at their discretion.
- 8.5 To be eligible for the Best Craven Motor Club, Best Farnborough District Motor Club & Best Sutton & Cheam Motor Club awards competitors must have been fully elected members of the club prior to 1st April 2018.
- 8.6 Award winning competitors must be present to collect their award unless other arrangements are made. Failure to do so WILL RESULT IN FORFEITURE. Such forfeiture will not apply to placing in the results.

ARTICLE 9 - Entries and Pre-Event formalities

- 9.1 Entries for the event will OPEN on Saturday 7th April and CLOSE On Wednesday 30th May 2018. The Organisers reserve the right to accept entries after this date should the maximum number not be reached.
- 9.2 The TOTAL entry fee is **£285*** up to and including 30th May 2018. Thereafter, the fee for any entry accepted is **£295***. *As part of that entry fee, competitors are required to pay a minimum **£45** contribution to charity (***which has been included in the figures above**). **Please note that this charitable element is non-refundable upon cancellation - See Article 9.12.***
- 9.3 Payments can be made by BACS where possible or by Debit Card. Payment by cheque will only be accepted with postal entries. NO ENTRY WILL BE DEEMED AS ACCEPTED UNTIL PAYMENT IS MADE. Cheques and debit cards will be transacted upon receipt. Please see <https://abingdoncarnival.com/car-nival-rally-stages/> for full details of payment methods.
- 9.4 Due to recent changes in legislation, Credit Cards can no longer be accepted.
- 9.5 Cheques should be made payable to **ABINGDON MOTORSPORT CAR-NIVAL**. Debit Card transactions will be shown as **TEAM TEMPEST** on statements.
- 9.6 Entries will only be accepted on full completion of the online entry form or receipt of a hard copy / email image (entries.secretary@aol.com).
- 9.7 Incomplete Entry Forms will be returned and deemed as not acceptable.
- 9.8 Entries should be submitted to:
Pam Guess 8 Bethel Lane, Upper Hale, Farnham, Surrey GU9 0QA
Tel: 01252 727390 (Before 9 pm) e-mail: entries.secretary@aol.com

9.9 Due to the prior amount of speculative and subsequently cancelled entries, any entry withdrawn prior to the closing date will be refunded as follows:

- Before Monday 21st May* - *In full less the £45 charitable contribution*
- Before Midnight on* - *In full less the £45 charitable contribution*
- Wednesday 30th May* - *and £30 administration fee (£75).*
- After Midnight on* - *At the organisers discretion and based upon*
- Wednesday 30th May* - *entry level on the day of the event.*

IF YOU FIND THIS UNACCEPTABLE THEN PLEASE DO NOT ENTER.

9.12 Entry fees will not be refunded to any entry that fails to start or to meet the Noise / Scrutineering requirements.

9.13 Entries will be accepted on a first come, first served basis.

9.14 The MAXIMUM number of starters will be 100 (including reserves).

9.15 The MINIMUM entry for the event is 40.

9.16 Should the minimum number in Article 9.15 not be reached the organisers reserve the right to cancel the event.

9.17 The order of starting will be at the organiser's discretion and will be based upon seeding information given on the entry form. Discussions will not be entered into regarding the starting order of any competitor. Entries who do not provide seeding information may be seeded at the back of the field

9.18 DUE TO A NUMBER OF COMPETITORS ABUSING THE FACILITY DOCUMENTATION WILL TAKE PLACE BETWEEN 15:00 - 19:00 HRS ON SATURDAY 9th JUNE 2018 FOR ALL COMPETITORS. HOWEVER, IF FOR ANY REASON 1 MEMBER OF THE CREW (NOT BOTH MEMBERS!) CANNOT BE PRESENT ON SATURDAY 9th JUNE 2018 THEN, IN EXCHANGE FOR AN ADDITIONAL £25 DONATION TO CHARITY, THEY MAY SIGN ON AT 7.30 am ON SUNDAY 10th JUNE 2018. THIS IS A SPECIAL CONCESSION AND MUST BE BY PRIOR APPOINTMENT, BOOKED AND CONFIRMED BY THE ENTRIES SECRETARY BEFORE SUNDAY 3rd JUNE 2018.

9.19 ANY CREW NOT SIGNED ON IN ACCORDANCE WITH 9.18 WILL BE REMOVED FROM THE ENTRY LIST AND THEIR PLACE ALLOCATED TO A RESERVE.

9.20 Details of Sound Tests and Scrutineering will be advised in the Final Instructions.

9.21 IT SHOULD BE NOTED THAT THESE WILL TAKE PLACE ON SATURDAY 9th JUNE 2018 BETWEEN 15.00 - 19.00 HRS WITHOUT EXCEPTION.

ARTICLE 10 - Officials

10.1 The Officials of the Meeting will be;

MSA Steward	TBA	
Club Stewards	Tim Walton / Darren Loveys	
Event Director	Barry Guess	07889 799972
Clerk of the Course	Martin Douglas	07815 371276
Dep. Clerk of the Course	Ian Brooks (Logistics)	07801 038160
	Bryan Hull (Operations)	07770 237686
	Pete Henness (Route)	07778 385128
Secretary of the Meeting	Simon May	07881 625446
Entries Secretary	Pam Guess	01252 727390
Chief Marshal	Dave Whyman	07831 671308
		davewhyman@hotmail.com
Safety Officer	Sarah Johnson	07581 344778
Service & Spectator Safety	Darren Wicks	07491 149761
Radio Co-ordinator	Sue Fielding	01252 628020
Competitor Liaison	David Penn	07969 626837
Facilities Manager	Norman Phillips	07763 224585
MSA Env. Inspector	Dennis Dubber	07831 107227
MSA Timekeeper	Gary Nicholls	01245 351468
MSA Chief Scrutineer	George Rolph	01737 842909
Child Safeguarding Officer	Tony Perrett	07799 717800

Please DO NOT telephone officials after 21.00 hours

ARTICLE 11 - Service

- 11.1 Competitors are reminded that ALL persons entering the venue having connection with their entry are subject to the rules and regulations governing servicing and service personnel.
- 11.2 Servicing will only take place in a central location for the entire event.
- 11.3 Any competitor found servicing in areas other than the specified Service Area WILL BE EXCLUDED - ALL OTHER AREAS ARE OUT OF BOUNDS.
- 11.4 Person(s) found in areas deemed out of bounds may cause the entry with which they are associated, or have entered the venue, to be deemed to be in contravention of Article 11.3 and will be subject to a penalty up to and including exclusion from the event.
- 11.5 There will NOT be a designated re-fuelling area.
- 11.6 Competitors are reminded of the requirements under the Health & Safety at Work Act regarding the refuelling of vehicles. All entrants must ensure that all persons connected with their entry have read and fully understood the following statement: *'Every person participating in this event, whether employed or voluntary, shall take reasonable care for the health and safety of themselves or other people who may be affected by his / her acts or omissions during the operation of the event.'*
- 11.7 Water, hot food & drink will be available throughout the day.
- 11.8 No engines should be run before 08.00 hrs. Please assist us by keeping the noise in the service area to a minimum. If required and by special arrangement, areas will be made available for any vehicle which needs to be 'revved' prior to the commencement of competition.

- 11.9 The running of engines and transmissions whilst the vehicle is raised is strictly prohibited unless the vehicle is facing inwards towards a stationary vehicle (Service Van) and an operator is sitting in the driver's seat. The use of axle stands during this type of operation is mandatory. Public access within 3 metres of spinning wheels should be prohibited.

ARTICLE 12 - Markings & Penalties

- 12.1 Markings will be as printed in R.32.1.
- 12.2 Penalties will be as printed in Chart R32.2 with the exception of those listed which are modified as follows:
- a) *Not reporting at an Arrival or Start Control (Not inc. Finish)* 30 Minutes
 - e) *Making a false start* _____ 30 Seconds
 - h) *For each minute over target time on a road section or for each minute over target time in a service area* _____ 1 minute
 - m) *Excessive vehicle sound (Art 13)* _____ EXCLUSION
 - n) *Receiving assistance contrary to R38.1.2* _____ EXCLUSION
- 12.3 Chart 32.2 (c) is deemed to include deliberately hitting chicanes in order to gain an advantage and taking wrong routes at split junctions.
- 12.4 The following Officials will be Judges of Fact, appointed in relation to:
R25.6 (Correct route) - Marshals as identified on the Official Notice Board
R25.7.2 (False Starts) - Start Line Officials
R25.9 (Possession of pre-event notes) - All Officials named in Article 10
R38.1.3 (Service and Out of Bounds areas) - All Marshals and Officials
R25.5.3 (Smoking on a special stage inc. Control Areas) - All Marshals and Officials
R25.3.1 (Helmets, overalls and seat belts) - All Marshals and Officials
- 12.5 Competitors failing to report to any TC in accordance with Chart R32.2 (a) must apply to the organisers to continue in the event so that they may be allocated an appropriate restart time at the next Stage Arrival Control.

ARTICLE 13 - Modifications to the General Regulations

- 13.1 The General Regulations of the Motor Sports Association are modified as follows:
- 13.2 D17.1 Double entered vehicles may be permitted at the organiser's discretion.
- 13.3 J5.18 Vehicles may be subject to noise tests should they be considered as producing excessive noise that may violate the venue conditions of use. Vehicles failing to meet the requirements of such tests shall be given up to 30-minutes to effect permanent repairs. If, after effecting repair, the vehicle is still deemed to have failed to meet the specified maximum noise limit then it shall be excluded from the event. Any vehicle producing spurious noises (e.g. backfires or popping of any kind) may be subject to immediate withdrawal.

THE USE OF **EARLY** NOISE GENERATING IGNITION OR ANTI-LAG SYSTEMS WHICH PRODUCE SPURIOUS LOUD POPS AND BANGS OR EXCESSIVE NOISE ARE PROHIBITED WITHOUT EXCEPTION AND WILL LEAD TO IMMEDIATE EXCLUSION.

In all cases the decision of the Clerk of the Course shall be final.

- 13.4 R5.4.3 Both members of the crew may drive on special stages subject to licencing requirements and nomination on the entry form.

- 13.5 R25.7.2 The starting procedure for stages will be via a 'Traffic Light' system, specific details of which will be included in the Road Book.
- 13.6 R30.1.1 Stages will open at the due arrival time of the first car and close as directed by the Clerk of the Course taking into account the due time of arrival of the last competing car.
- 13.7 R31.2.5 The maximum permitted lateness will be 5 minutes between the start and finish of the rally.
- 13.8 R31.2.6 There will be NO CUMULATIVE PENALTY FREE LATENESS and lateness at time controls will be penalised at 1 minute per minute late subject to article 13.7 & and the application of article 12.2(a).
- 13.9 R46.1.2 Vehicles must be registered and hold a valid MOT certificate (as required) which must be presented at Scrutineering. The requirement for TAX is relaxed (R46.1.1).
- 13.10 J5.13.4 Competitors are only permitted to use fuel that conforms to the definitions of Pump Fuels in the 2017 MSA Yearbook or fuel that complies with FIA Appendix J, Article 252, Art 9.

ARTICLE 14 - Results, Ties & Protests

- 14.1 Interim, provisional and final results will be displayed on the Official Notice Board, located at the Event Marquee throughout the event.
- 14.2 Ties will be resolved in accordance with R15.2.2.
- 14.3 Protests must be made in accordance with C5.1.

ARTICLE 15 - Additional Information

- 15.1 Vehicles are required to carry identification numbers in accordance with J4.1, which WILL be on sale at DOCUMENTATION.
- 15.2 Competitors may be required to carry additional identification and / or advertising in accordance with H29.
- 15.3 Stage maps, provisional entry lists and time schedules will be available via www.abingdoncarnival.com 7 days before the event. It should be noted that this information will be for planning purposes and should be treated as provisional only.
- 15.4 The Official Photographer will be Mark Sims (www.rallygallery.com).
- 15.5 The Official Tyre supplier will be Slick Tyres (Andrew Knott 0114 247 0485).
- 15.6 **PLEASE NOTE THAT CAMPING / CARAVANS / MOTORHOMES ARE STRICTLY FORBIDDEN IN THE SERVICE AREA, UNDER OUR AGREEMENT WITH THE MoD AND LOCAL AUTHORITIES.**
- 15.7 You are reminded that any person(s) found traversing any stages other than for means of access / egress of the venue will be excluded.
- 15.8 Navigators only may apply for a Non-Race National B status licence at the event subject to H26.1.4 - Fully completed form with photo must be submitted at Documentation (Forms will not be available at Documentation).
- 15.9 The Mike Fielding Scholarship Award (Inc free entry) is available for Drivers taking part in their first ever stage rally and who are members of either Craven MC, Farnborough DMC or Sutton & Cheam MC before 1st April 2018. Contact the Event Director for more details.

Friday 8th - Sat 9th June
STAYING OVERNIGHT...?

Why not join us for some

EXTRA TIME!

The Superb Stowford House Bar B Que

plus

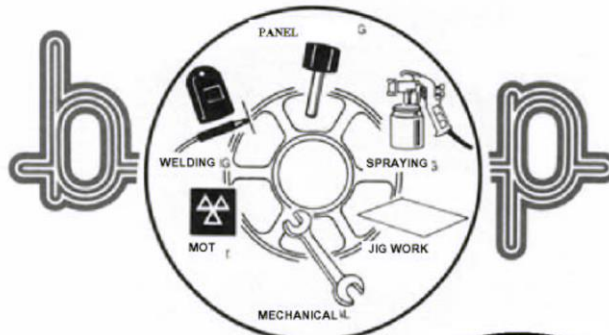
Live Cabaret (Club Comedian)

Licensed Bar / Beer Tent

FREE CAMPING & CARAVANS

DAVE KEDWARD

B.P. MOTOR BODYBUILDERS
& ENGINEERS



KEDS *Motorsport*

DU PONT

- All Insurance Work Undertaken
- Full Jig Facilities
- Personal Service
- Rally Car Preparation & Repair
- All Work Guaranteed
- Rally Cars & Parts Bought for Cash
- Low Bake Oven
- Recovery

91 New Barn Lane, Prestbury,
Cheltenham, Glos
GL52 3LF

Tel & Fax
01242 245698

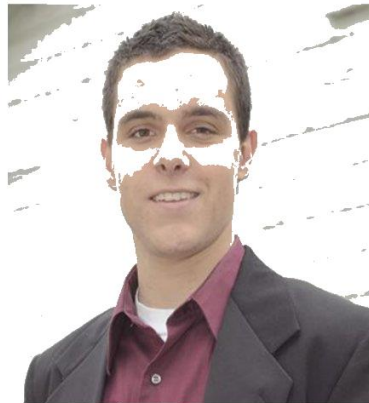


ABINGDON MOTORSPORT
CAR-nival
Presents

Are you having a laugh....
Beer and belly laughs in the CAR-nival Marquee



The World of Laughter
featuring



Mark King



Ben Haywood



Live in the CAR-nival Marquee
Saturday 9:00pm
9th June

